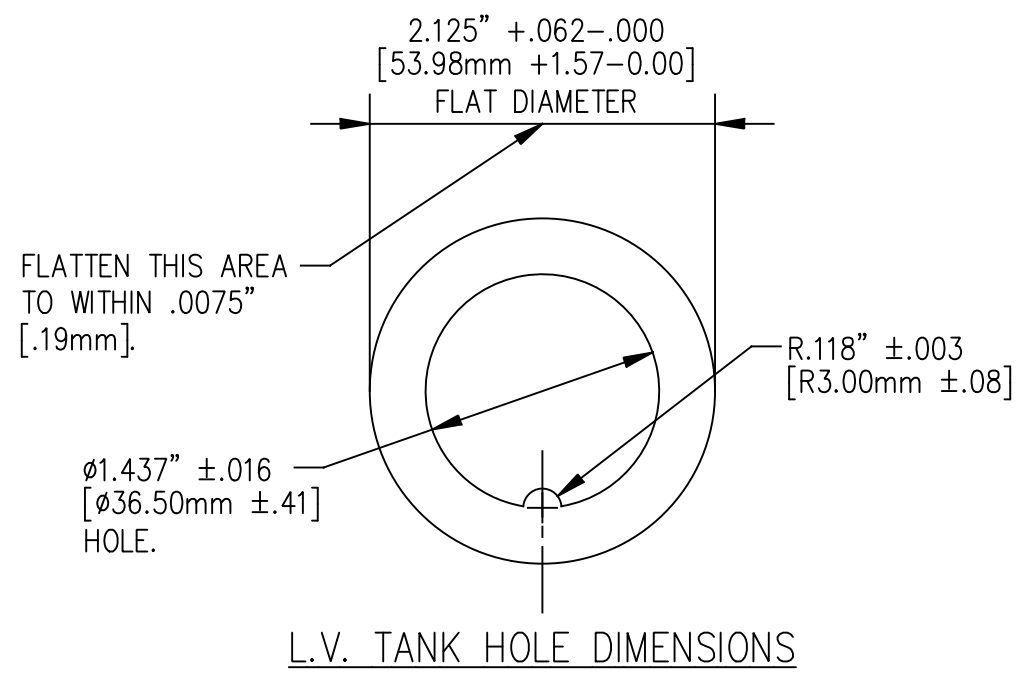
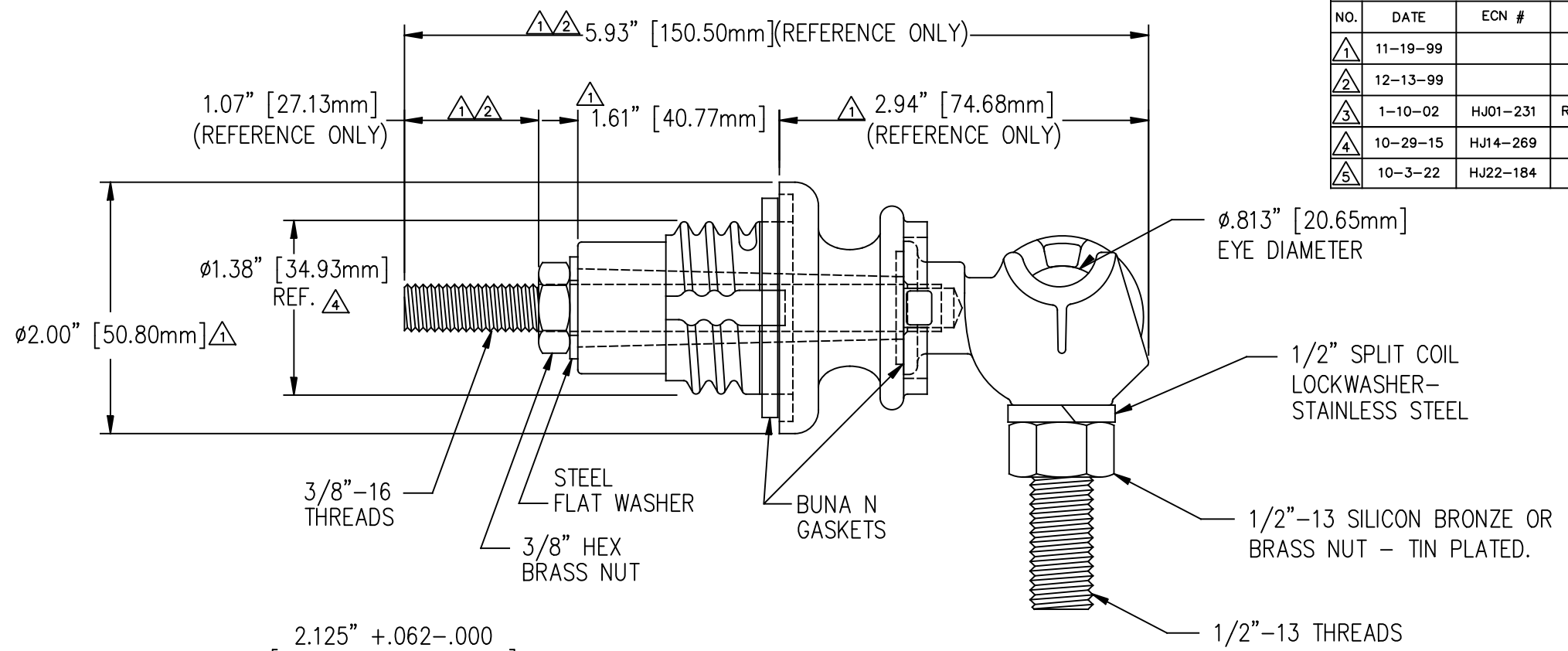


PLASTIC NUT



L.V. TANK HOLE DIMENSIONS

REVISIONS					
NO.	DATE	ECN #	REMARKS	BY	APPD.
1	11-19-99		EDITED DIMENSIONS.	CJT	LHE
2	12-13-99		EDITED DIMENSIONS.	CJT	LHE
3	1-10-02	HJ01-231	REMOVED TORQUE NOTE.	CJT	LHE
4	10-29-15	HJ14-269	Ø1.38 REF. WAS Ø1.39	CLS	BLB
5	10-3-22	HJ22-184	CHANGED DESC.	MAD	CLS

NOTES:
1. INCLUDES TWO EXTRA BRASS NUTS.

NOTES:
STUD - COPPER CDA 11000
BODY - CDA 84400 TIN PLATED
EYEBOLT - CDA 95500 TIN PLATED

<p>TOLERANCES (EXCEPT AS NOTED)</p> <p>DECIMAL ± .032" / .8mm</p> <p>FRACTIONAL ±</p> <p>ANGULAR ± 2°</p>		<p>H-J ENTERPRISES, INC.</p> <p>3010 HIGH RIDGE BLVD. HIGH RIDGE, MO. 63049 USA PHONE 1-636-677-3421 FAX 1-636-376-1915</p>	
		<p>125A L.V. BUSHING ASSEMBLY NON-PORCELAIN INSULATOR</p>	
		<p>MATERIAL (SEE ABOVE)</p>	
		<p>CHK'D</p>	<p>APP'D</p>
<p>DRAWN BY</p> <p>TLH</p>	<p>DATE</p> <p>4-22-96</p>	<p>SCALE</p> <p>N.T.S.</p>	